

LUMEN

LA CITÉ DE LA LUMIÈRE

BRINGING TOGETHER ALL STAKEHOLDERS IN THE LIGHT SECTOR ON A SINGLE SITE BY STIMULATING THE SYNERGY OF THEIR EXPERTISE ON A SCIENTIFIC, TECHNICAL, CULTURAL AND SOCIETAL LEVEL, IS WHAT THE LUMEN-LA CITÉ DE LA LUMIÈRE PROJECT AIMS TO DO.

LIGHT

FOR

HUMANITY



EDITORIAL



THE SITE, UNIQUE IN EUROPE AND CREATED BY THE CLUSTER LUMIÈRE AND THE GROUPE CARDINAL, WILL OPEN AT THE HEART OF LYON'S NEW CONFLUENCE NEIGHBORHOOD IN EARLY 2020.

« The Lumen-Cité de la Lumière hub will provide permanent technological innovations in lighting with a unifying setting, pooled resources and a hosting facility, thus creating maximum visibility to go even further in serving humanity. »

PHILIPPE BADAROUX,
Cluster Lumière Chairman

« We want to build an innovative, connected building, with a strong architectural identity and open to the city. Through its design, LUMEN encourages creating synergies between its users in order to unite the light sector at the heart of the building. »

STÉPHANE RUBI,
Cardinal Investissement CEO

H.

FOR HUMAN

An animated hub in the city

Imagined as an enlightened place conducive to meetings and exchanges, Lumen-La Cité de la Lumière has naturally been designed as an open space.

Companies, laboratories, start-ups, design offices, manufacturers, and public utilities will freely share spaces, work and create together within a site that is adapted to their uses and needs. Each of the ecosystem's stakeholders is free to use this technological environment to its advantage and to create true group dynamics for developing innovations, services, and content for the almost infinite field of light.

Lumen-La Cité de la Lumière is made for humans, by humans.





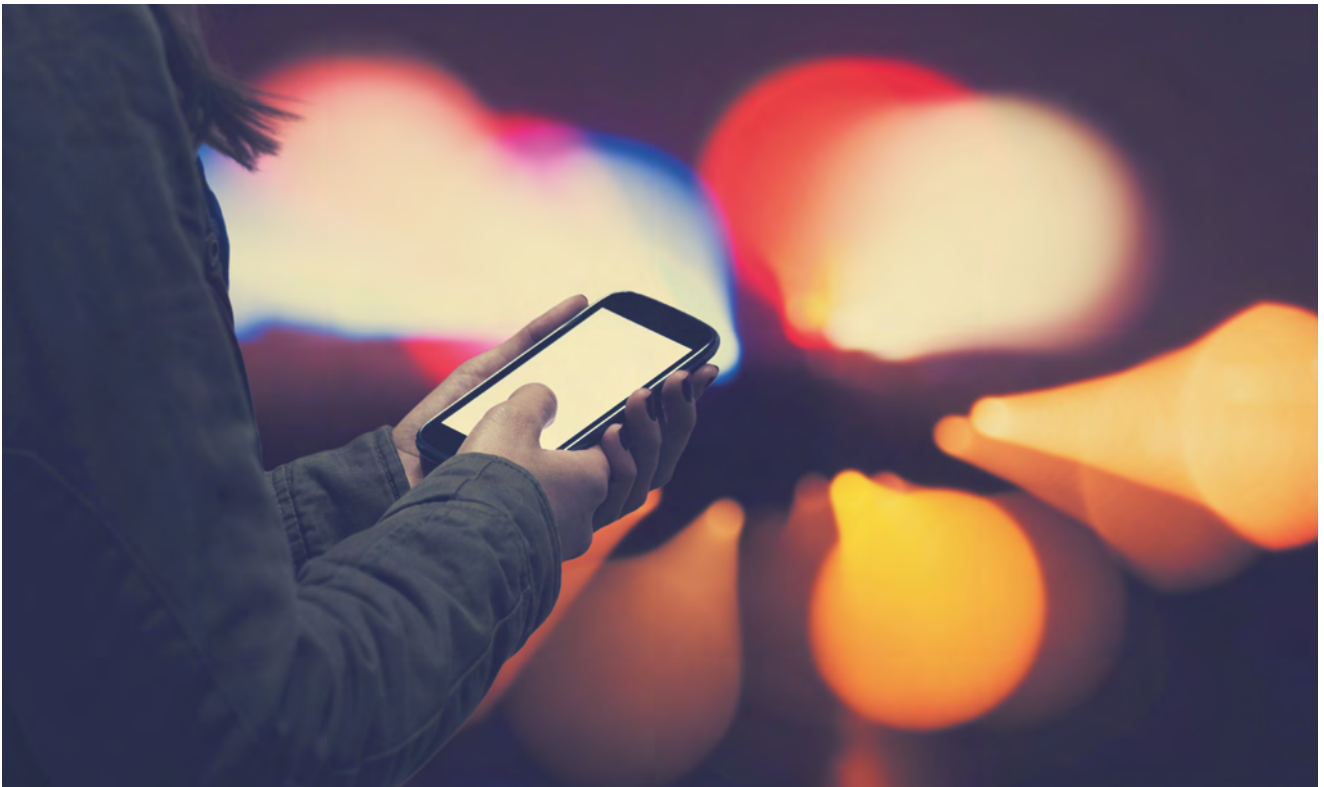
FOR
USES

A creative living lab

Lumen-La Cité de la Lumière is a connected building, serving as a place of experience and experimentation.

Lighting has become an integral part of our lives, be it in home, work, healthcare or contemplative settings, but there remains so much more to know, to imagine and to discover. The widespread digitization of lighting systems also gradually brings light closer to the world of projection and virtual reality, allowing imagining the light of the future.

**Lumen-La Cité de la Lumière adopts an innovative vision:
approach light from the way it is used.**



B.

FOR BUSINESS

An international showcase for light

Lumen-La Cité de la Lumière will promote synergies, help create services and opportunities, and accelerate network dynamics. The site will also contribute to continuing and initial education programs.

Lumen-La Cité de la Lumière will also work in close collaboration with its neighbor and French Tech flagship location Halle Girard, in order to support technological leaps of light start-ups. Perfectly integrated into the local institutional and economic tissue, various tools in the search for institutional and international partnerships have been put into place with the support of the Auvergne-Rhône-Alpes Region and the Lyon Métropole, which has a long history of serving as a testing ground for the light sector.

Lumen-La Cité de la Lumière offers its occupants a real window of visibility within the international light sector.



DESCRIPTION



A 5,800 M², 8 STORY BUILDING, ADAPTED TO THE NEEDS OF ITS USERS. LUMEN LA CITÉ DE LA LUMIÈRE WILL ALTERNATE INDIVIDUAL AND SHARED WORK SPACES IN THE FORM OF A LIVING LAB WITH A HIGH QUALITY FIT OUT. LOCATED AT THE HEART OF ONE OF LYON'S INNOVATION AREAS, IT IS EASILY ACCESSIBLE BY PUBLIC TRANSPORT (METRO, TRAM, TRAIN) AND PROVIDES AN UNOBSTRUCTED VIEW OF THE CITY OF LYON.

A modular and flexible building

Ground floor:

- Interactive pop-up exhibition space
- Bar and restaurant services
- Collaborative workspace

1st and 2nd floor:

- Test lab
- Characterization lab
- Trial and real-world demonstration spaces

3rd through 8th floor:

- Co-working spaces
- Private workspaces
- Meeting rooms
- Green roof with light well
- Loggias, third spaces, shared client reception services and informal areas

The building will be able to accommodate businesses, from shared workstations to a large entity for about 1,000 m². It is designed to eventually house 50 companies creating a projected 600 jobs.

PARTICIPATE



WITH THE EXCELLENCE, ENERGY AND EXPERTISE OF THE FRENCH LIGHT SECTOR BEYOND DOUBT, LUMEN-LA CITÉ DE LA LUMIÈRE AIMS TO GIVE MORE VISIBILITY TO THE INNOVATIVE ACTIONS OF THIS PIONEERING SECTOR. LUMEN-LA CITÉ DE LA LUMIÈRE, A H.U.B. SERVING HUMAN WELLBEING.

CLUSTER LUMIÈRE



The ambitious and innovative Lumen-La Cité de la Lumière project was initiated by the Cluster Lumière. This network of expertise in the French light sector will celebrate its tenth anniversary in 2018 and currently includes 170 companies. As a laboratory of ideas and ambassador of unparalleled expertise, the Cluster Lumière assembles innovations and reflections of an entire sector in response to the growing and constantly questioned needs of an enlightened world.

Contact Cluster Lumière

Patrick CLERT GIRARD
04 72 40 57 07
p.clert-girard@cluster-lumiere.com

Contact Groupe Cardinal

François PIFFETEAU
04 72 07 62 63
f.piffeteau@groupecardinal.com

www.lumen-hub.com

GROUPE CARDINAL



With a presence all over France, the Groupe Cardinal is specialized in residential property development and management, and has its own investment fund. The Groupe Cardinal develops large-scale operations including numerous head offices (Euronews, Véolia, Akka Technologies), healthcare facilities, housing and managed housing, student residences, and hotels (Mama Shelter, Mob Hotel). By choosing to work with renowned architects such as Jean Nouvel, Rudy Ricciotti, Jakob + MacFarlane and Jean-Michel Wilmotte, the Groupe Cardinal, as Developer-Designer, is positioning itself as an innovator in avant-garde architecture and interior design. It fosters the comfort and wellbeing of the occupants by providing its clients with creative and personalized solutions.